

BlockFace Modular Stamp Kit



martin_schneider

[VIEW IN BROWSER](#)

updated 16. 8. 2023 | published 16. 8. 2023

Summary

BlockFace is an easy-to-use modular typography printing kit designed by graphic artist Will Mower.

[Art & Design](#) > [Other Art & Designs](#)

Tags: [typography](#) [modular](#) [lasercutter](#) [mower](#) [kit](#) [stamp](#)
[will](#) [openpressproject](#) [letterpress](#) [blockface](#) [stampkit](#)
[typedesign](#)

Kickstarter campaign is live right now over at <https://www.kickstarter.com/projects/martinschneider/blockface-a-stamp-kit-to-explore-typography-and-more>

You can pledge for a DIY kit there if you don't want to source all the materials.

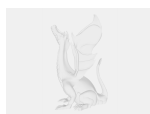
BlockFace is an easy-to-use modular typography printing kit consisting of 24 stamps, which you can combine to construct letterforms, design typographic posters and cards, and explore the joys of printmaking. It is a collaboration between us, the Open Press Project, and Will Mower, a graphic artist working in London. The kit was designed by Will and is produced and distributed by us.

Link for instructions on how to make your own stamp set: <https://openpressproject.com/blockface>

Model files

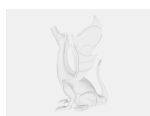


blockface_opensource.stl

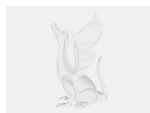


blockface_lasercut.dxf

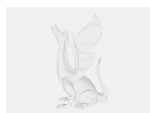
Other files



blockface_lasercut.svg



blockface_lasercut.pdf



blockface_instructions.pdf

License

This work is licensed under a
[Creative Commons \(4.0 International License\)](https://creativecommons.org/licenses/by-nc-sa/4.0/)



Attribution—Noncommercial—Share Alike

-
- ✗ | Sharing without ATTRIBUTION
 - ✓ | Remix Culture allowed

- ✖ | Commercial Use
- ✖ | Free Cultural Works
- ✖ | Meets Open Definition